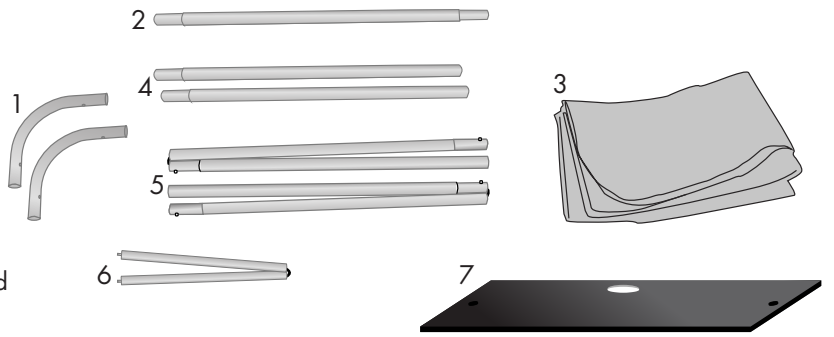


3FT EuroFit Steel Base Display

Product Parts

- 1 - Corners (x2)
- 2 - Horizontal Top Pole (x1)
- 3 - Fabric Graphic (x1)
- 4 - Bottom Pole (x2)
- 5 - Vertical Shock Cord Pole (x2)
- 6 - Horizontal Shock Cord Middle Pole (x1)
- 7 - Base (x1)



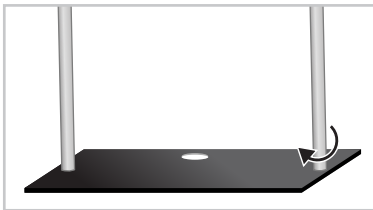
Display Set-Up

Step 1

Begin by removing all parts from the carry case and place on a clean, flat surface.

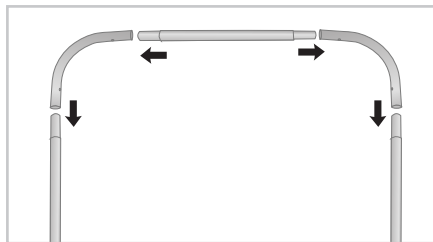
Step 3

Screw the bottoms of the Vertical Shock-Corded Poles (4) into the Base (7) Clockwise until snug.
* DO NOT OVER TIGHTEN



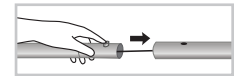
Step 5

Attach the Corners (1) and Top Horizontal Pole (2) to the Vertical Shock-Corded Poles as shown.



Step 2

Assemble all poles by placing the tapered end of one pole into the large end of the next while pressing the snap button as shown.



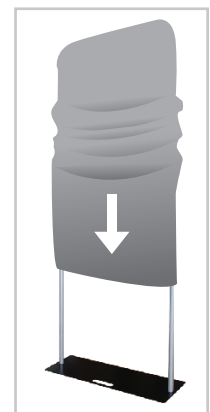
Step 4

Screw the ends of the Horizontal Middle Pole (6) into both sides of the Vertical Shock-Corded Poles (5) as shown.



Step 6

Slide Graphic (5) over the top of the display as shown.



Storage & Care

Place all product parts into Carry Case and store in a cool dry location. Recommended for indoor use only. Machine wash on gentle cycle using mild detergent. Tumble Dry No Heat. Do NOT dry clean, Do NOT Iron.